

# Micro Lambda Controller HOW TO

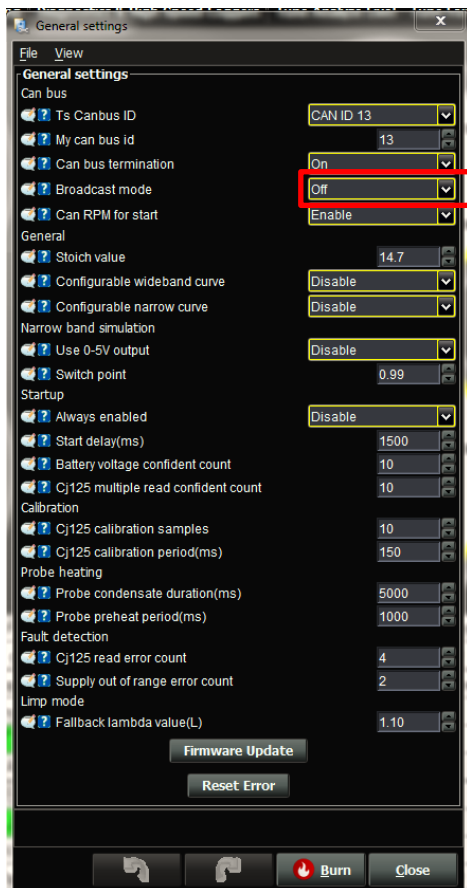
---



## Setup to work with MS2:

### Settings at micro lambda:

Go to “Controller Setup” → “General settings” to get the following menu:



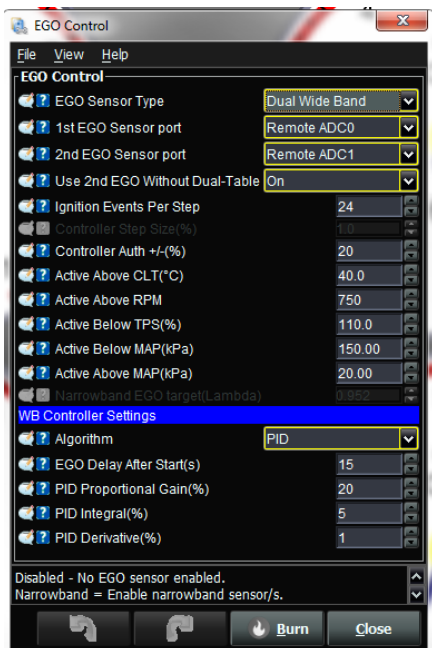
Turn one of the available modes on:  
MS2L1 → for lambda 1  
MS2L2 → for lambda 2

One micro lambda controller can act as one lambda channel on the can bus.

After that press “Burn” setup finished for micro lambda controller

## Settings at Megasquirt 2:

Go to „Fuel Settings“ → “EGO Control” to get the following menu:



Setup this:

EGO Sensor Type: “Single Wide Band if you have on micro lambda controller or Dual Wide Band if you have 2 controllers”

1<sup>st</sup> EGO Sensor port: “Set to Remote ADC0”

2<sup>nd</sup> EGO Sensor port: “Set to Remote ADC1”

Go to “Tools” → “Calibrate AFR Table” to get the following menu:



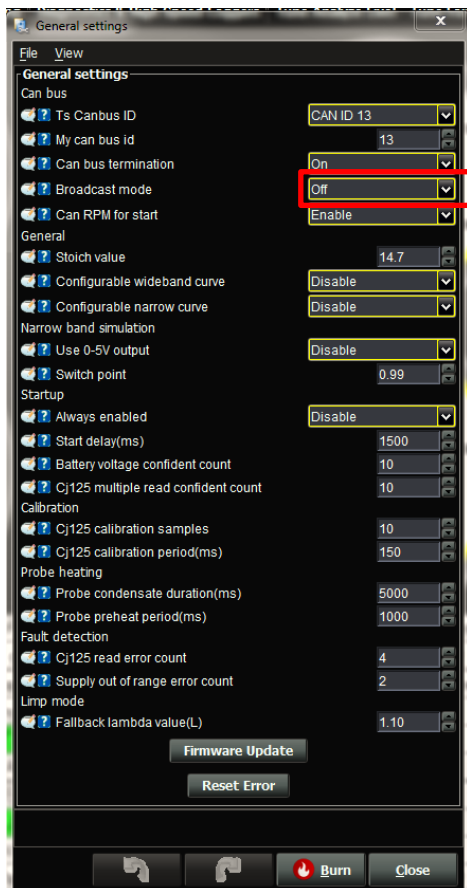
Select Innovate LC-1 / LC-2 Default  
Press „Write to Controller“

Settings for MS2 finished.  
If Micro Lambda controller is on and  
can bus is correctly connected you  
should see the lambda values at the  
gauges.

## Setup to work with MS3:

### Settings at micro lambda:

Go to “Controller Setup” → “General settings” to get the following menu:



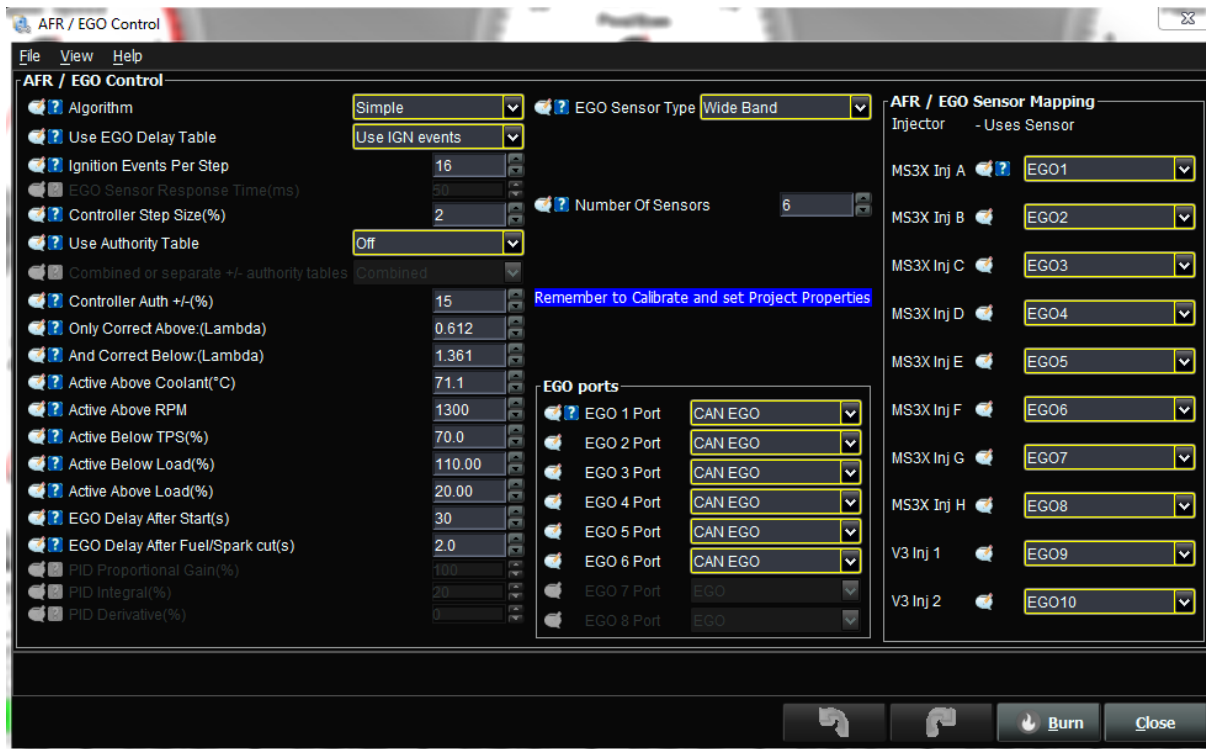
Turn one of the available modes on:  
MS3L1 → for lambda 1  
MS3L2 → for lambda 2  
... → for lambda 3..5  
MS3L6 → for lambda 6

One micro lambda controller can act as one lambda channel on the can bus.

After that press “Burn” setup finished for micro lambda controller

## Settings at Megasquirt 3:

Go to „Fuel Settings“ → “AFR/EGO Control” to get the following menu:



Setup this:

EGO Sensor Type: “Wide Band”

Number Of Sensors: “Number of controllers you have on the bus”

EGO 1..6 Port: “Set to CAN EGO”

AFR / EGO Sensor Mapping: “Map the correct EGO to the injector channel”  
(This is also covered in the ms3 manual)

Go to “Tools” → “Calibrate AFR Table” to get the following menu:



Select Innovate LC-1 / LC-2 Default  
Press „Write to Controller“

Settings for MS3 finished.  
If Micro Lambda controller is on and  
can bus is correctly connected you  
should see the lambda values at the  
gauges.